

Krakow in Numbers 2011

The brochure includes the most important data illustrating the functioning of the City of Krakow in 2011, broken down by selected themes. Comprehensive information and detailed elaboration of the highlighted themes can be found in the State of the City Report, published annually by the City Strategy and Development Department of the Municipality of Krakow (available as a hard or digital copy).

Table of contents

Geographical background	1
Krakow Residents	1
Education	2
Higher education	3
The Economy	5
Tourism	8
Culture and national heritage	9
Transport	10
Municipal management	12
Environmental protection	13
Housing	14
Sports and recreation	15
Healthcare	15
Public safety	18
Spatial planning	19
Self government management	19
Property and budget	21

We would like to encourage you to consult the other publications about Krakow and related statistics: Reports on the State of the City, Krakow Real Estate Market, Statistical Bulletins of the City of Krakow and the StatKraK Liczby...Miasto...Mieszkańcy website available on www.krakow.pl in the Business tag or on www.bip.krakow.pl.

Geographical background

- Surface area: 327 km²
- Location: The coordinates of the Monument to Adam Mickiewicz in the Main Square, in the heart of the Old Town: 50°03'41"N and 19°56'16"E
- Near the south-eastern limit of the City (District X – Swoszowice) – the intersection of parallel 50°N and meridian 20°E
- Width from south to north: 18 km
- Width from west to east: 31 km
- Highest altitude: 383 m a.s.l. – Piłsudski Mound
- Lowest altitude: 188 m a.s.l. – estuary of the Potok Kościelnicki stream
- Average air temperature¹: 9.7°C; average temperature for January: 0.1°C; average temperature for July: 18.4°C
- Highest air temperature: 34.8°C (August 27th)
- Lowest air temperature: -12.5°C (January 6th)
- Annual precipitation total: 563.3 mm

¹ Research conducted in the Scientific Centre of The Botanic Garden of Jagiellonian University

Krakow residents

	2009	2010	2011
Total, including	755,000	756,183	759,137
Women	402,111	402,829	404,918
Men	352,889	353,354	354,219

Source: Krakow Statistical Office

Population

	2009	2010	2011 ¹
Pre-working age	116,859	116,876	119,302
Working age	495,365	492,857	470,078
Post-working age	142,776	146,450	152,534

¹ Based on the data from the IT Department of the Municipality of Krakow

Source: Krakow Statistical Office

Age distribution

	2009	2010	2011
Births	7,889	7,848	7,417
Deaths	7,198	7,081	6,995
Population growth	691	767	422
Moving in (registered)	6,852	7,355	7,801
Moving out (registered)	6,440	6,939	6,826
Migration balance	412	416	975

Source: Main Statistical Office and Krakow Statistical Office

Natural movement and migration in Krakow

3

Education

Preschools

	2009	2010	2011
Total number of preschools	193	219	307
Number of children in preschools	20,417	21,070	23,932
Number of reception classes in primary schools	77	73	67
Number of children in reception classes in primary schools	2,019	1,942	1,974

Source: Education Department of the Municipality of Krakow

Primary schools

	2009	2010	2011
Total number of primary schools	127	128	130
Number of students	34,307	34,622	35,960
Number of integration classes in self-government schools	161	160	157

Source: Education Department of the Municipality of Krakow

Junior schools

	2009	2010	2011
Total number of junior schools	89	90	92
Number of students	19,311	18,458	17,903
Number of integration classes in self-government schools	124	116	107

Source: Education Department of the Municipality of Krakow

Secondary schools

	2009	2010	2011
General secondary schools	95	100	100
Total number of vocational secondary schools ¹	160	145	145
Total number of secondary schools	255	245	245
Number of students of general secondary schools	23,812	22,812	21,936
Total number of students in vocational secondary schools ¹	27,093	27,147	28,282
Total number of students in secondary schools	50,905	49,959	50,218

¹ Including specialised secondary schools and basic vocational schools of the Municipality of Krakow

Source: Education Department of the Municipality of Krakow





Higher education

4

	2010	2011
Number of higher education institutions in Krakow, including:	23	24
Public higher education institutions	10	10
Private higher education institutions	13	14
Schools offering master's degrees	15	15
Schools offering bachelor's degrees only	8	9
Total number of students, including:	206,549	208,171
Number of students in full-time education	114,112	119,006
Number of students in part-time education	73,011	69,269
Total number of postgraduate and Ph.D. students	19,426	19,896
Total number of graduates, including:	54,600	57,671
Number of graduates of full-time and part-time programmes	42,571	46,158
Total number of postgraduate and Ph.D. graduates	12,029	11,513
Number of academic lecturers, including:	11,906	13,131
Number of professors (full and associate) ¹	1,394	1,517

¹ Only those holding a general professor's title (excluding those holding a professor's title valid only at a particular university)

Source: higher education institutions, Krakow Statistical Office

Higher education
institutions in Krakow

**Students and
graduates of Krakow's
higher education
institutions**

Public higher education institutions	Total number of students¹	Total number of graduates²
Total public higher education institutions, including:	170,939	48,846
Jagiellonian University	51,601	13,434
University of Science and Technology	37,996	10,061
Krakow University of Economics	23,655	8,332
Pedagogical University	19,566	6,406
Krakow University of Technology	18,915	5,132
Agricultural University	12,659	3,679
University School of Physical Education	4,111	1,283
Academy of Fine Arts	1,453	359
Krakow Academy of Music	800	138
Academy for the Dramatic Arts	183	22
Total private higher education institutions, including:	37,232	8,825
A. Frycz Modrzewski Krakow University	13,222	1,561
Higher School of Management and Banking	6,017	2,355
Pontifical University of John Paul II in Krakow	3,296	844
Jesuit University Ignatianum in Krakow	3,275	1,257
Higher School of IT and Economics	1,778	831
B.Jański Academy	1,613	239
Tischner European University ⁴	1,097	117
J. Dietl Małopolska Higher Vocational School	2,522	574
Krakow School of Health Promotion	1,708	253
Polish Open University/Higher School of Management ³	1,891	564
Krakow School of Business and Commerce ⁴	173	116
Higher School of Insurance ⁴	225	79
Apeiron Public and Individual Security College ⁴	415	35
The College of Economics and Management in Krakow ⁵	0	0
Total public and private	208,171	57,671

¹ Including postgraduate and Ph.D. students

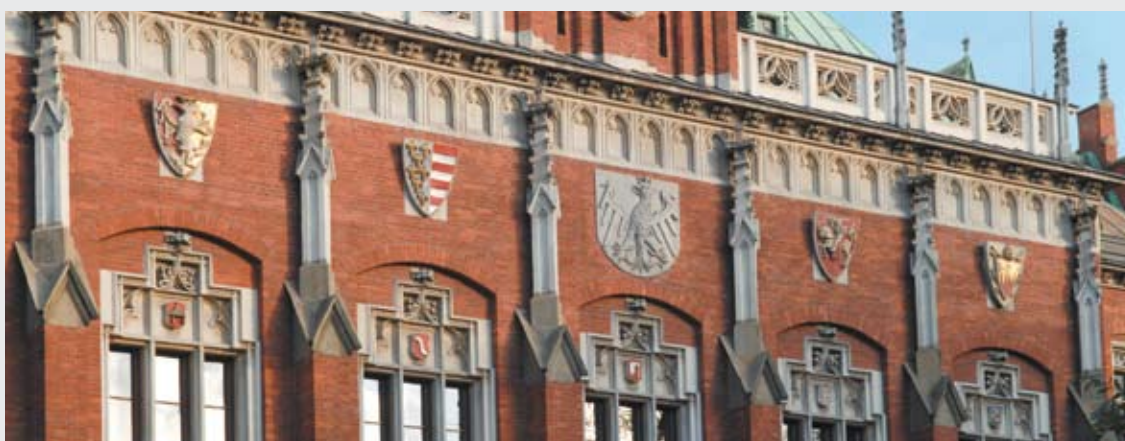
² Including postgraduate and Ph.D. graduates

³ Total number of students in the institutions, including the Warsaw, Krakow and Legnica branches

⁴ Data from Krakow Statistical Office

⁵ The College is registered but its academic staff gives lectures in Mielec. For the academic year 2012/2013 the College offers 2 new courses which will take place in Krakow

Source: higher education institutions, Krakow Statistical Office



The Economy

5

	2009	2010	2011
Total, including:	110,170	115,687	116,153
Public sector	1,459	1,472	1,470
Private sector	108,711	114,215	114,683

Source: Krakow Statistical Office

	2009	2010	2011
Total ¹	13,342	14,447	15,636
State Treasury-owned companies	54	51	48
Companies held by public legal persons	161	164	175
Territorial government companies	33	35	34
Companies held by domestic legal or natural persons	11,724	12,746	13,822
Companies held by foreign legal or natural persons	2,547	2,685	2,809

¹ Data from the columns do not add up to make the total, as they describe the companies broken down by all types of capital they possess, not only the majority capital

Source: Krakow Statistical Office

PKD section	Number of entities	(%)
Total, including:	116,153	100
Wholesale and retail trade; repair of motor vehicles	28,759	25
Professional, scientific and technical activities	15,170	13
Construction	10,677	9
Industry	8,919	8
Transporting and storage	7,714	7
Real estate activities	7,263	6
Human health and social work activities	7,106	6
Other services activities	6,906	6
Information and communication	5,201	5
Financial and insurance activities	4,343	4
Accommodation and food service activities	4,010	3
Administrative and support service activities	3,915	3
Education	3,446	3
Others	2,724	2

Source: Krakow Statistical Office

	2009	2010	2011
Total for the business sector	38,085,853	42,093,683	49,144,160
Private sector	33,764,188	37,550,378	46,949,750
Public sector	4,321,665	4,543,305	2,194,410

Source: Krakow Statistical Office

National business entities by sectors

Commercial companies by type of capital

Business entities by Polish Classification of Business Activity Categories

Revenue from sales of goods and services (in thousands of PLN)

**Investment¹
(current prices,
in thousands of PLN)**

	2009	2010	2011
Total, including fixed assets:	2,826,739	2,982,714	3,918,706
Building and Structures	1,284,288	1,389,146	1,740,979
Machines, equipment and tools	1,292,600	1,330,438	1,869,282
Means of Transport	240,038	250,225	296,682

¹ The data concerns business entities (based in Krakow), employing over 49 people

Source: Krakow Statistical Office

**Average employment
in the business sector**

	2009	2010	2011
Total for the business sector, including:	195,218	195,800	206,250
Private sector	174,818	175,972	193,382
Public sector	20,400	19,828	12,868

Source: Krakow Statistical Office

**Average gross
monthly salary in the
business sector**

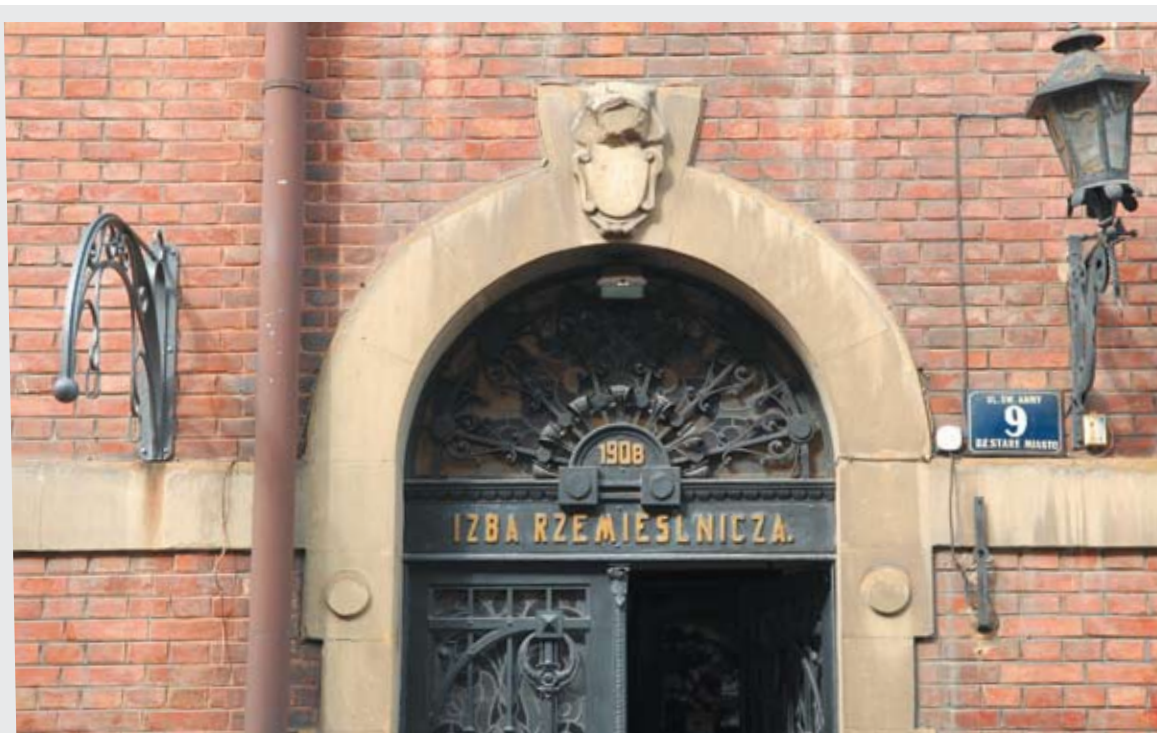
	2009	2010	2011
Total for the business sector	3,304.97	3,435.94	3,667.72
Private sector	3,220.24	3,343.83	3,657.81
Public sector	4,031.01	4,253.42	3,816.71

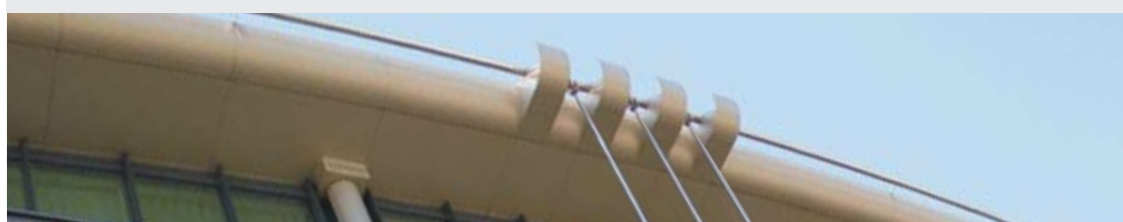
Source: Krakow Statistical Office

Unemployment

	2009	2010	2011
Registered unemployment rate (%)	4.2	4.7	4.9
Number of registered unemployed people (thousands)	16.0	18.7	19.4

Source: Municipal Employment Office in Krakow





Sub-zones	Total surface area (ha)	Total developed surface area (ha)
Krakow, including:	79.9513	57.2186
Krakow Nowa Huta	14.1921	14.1921
Krakow Podgórze	35.7007	27.0214
Krakow Śródmieście	30.0585	16.0051
Andrychów	19.4199	19.4199
Bochnia	60.8532	0
Boguchwała	8.0438	0
Bukowno	9.1857	0
Chetmek	11.2346	0
Dobczyce	6.8602	4.9572
Gdów	9.67	0
Krosno	5.7492	0
Książ Wielki	6.715	0
Limanowa	7.1074	1.9479
Niepołomice	207.9849	178.2223
Nowy Sącz	9.3227	5.5879
Oświęcim	14.1387	9.014
Skawina	4.4232	4.4232
Słomniki	1.7255	0
Tarnów	43.7915	34.9008
Wolbrom	16.3	3.57
Zabierzów	7.7	7.7
Zator	28.5417	4.7573
Total	558.7185	331.7191
Employment (number of people)		9,788
Number of SEZ business permits		100
Number of companies undertaking business activity		57
Investment made (in billions of PLN)		1,77
Target investment volume according to the business plan (in billions of PLN)		1,66

Source: Kraków Technology Park Ltd.

	2009	2010	2011
Existing (as of the 1st of January)	232,000	333,890	388,030
Growth over the year	101,890	54,140	46,290
Total	333,890	388,030	434,320
Forecast growth in the following year	51,000	55,230	54,000

Source: Colliers International in: Krakow Real Estate Market – published by the Municipality of Krakow

**Special Economic Zone
– Krakow Technology
Park (SEZ-KTP)**

**Modern office
space (m²)**

6

Tourism

Tourists and guests

	2009	2010	2011
Total number of visitors to Krakow, including:	7,300,000	8,150,000	8,600,000
Domestic	5,200,000	6,050,000	6,450,000
Foreign	2,100,000	2,100,000	2,150,000
Total number of tourists in Krakow, including:	5,850,000	6,050,000	6,550,000
Domestic	3,900,000	4,050,000	4,500,000
Foreign	1,950,000	2,000,000	2,050,000

Source: "Tourist traffic in Krakow" – a report drafted by the Małopolska Tourism Board, commissioned by the Municipality of Krakow

Accommodation

	2010		2011	
	Number of facilities	Number of beds	Number of facilities	Number of beds
**** Hotels	10	1,752	10	1,752
**** Hotels	21	3,521	25	4,451
*** Hotels	74	6,552	74	5,951
** Hotels	22	2,088	20	1,960
* Hotels	5	576	5	576
Hotels undergoing classification process	4	no data	3	no data
Guest houses	1	63	1	63
Bed and breakfasts	7	168	7	168
Youth Hostels	3	372	3	372
Year-round campsites (+seasonal)	3	108 (+296)	3	108 (+296)
SPA facilities ¹	1	53	1	90
Non-hotel accommodation	380	12,450	370	12,276
Total	531	27,999	522	28,063

¹ Swoszowice SPA

Source: Accommodation – Marshal Office of the Małopolska Region, non-hotel accommodation – the Municipality of Krakow

Use of collective accommodation establishments

	2009	2010	2011
Total number of users, including:	1,340,420	1,512,363	1,664,401 ¹
Foreign guests	688,871	770,243	815,785

¹ Regarding accommodation establishments for 10 or more guests

Source: Krakow Statistical Office

Culture and national heritage

	2010	2011
Culture centres	11	11
Municipal libraries (branches)	4 (62)	4 (65)
Regional libraries	1	1
Collections of municipal and regional libraries	1,739,857	1,731,190
Users of municipal and regional libraries	205,224	211,172
Books on loan	3,063,220	3,039,149
Number of theatres:	8	8
Number of opening shows	28	38
Number of shows	2,760	2,789
Number of participants	739,747	711,211
Number of orchestras	4	4
Number of concerts	828	863
Number of participants	241,619	240,679
Museums	8	8
Number of permanent exhibitions	32	36
Number of temporary exhibitions	115	136
Number of visitors	1,007,715	1,557,115
Number of galleries	1	1
Number of temporary exhibitions	21	17
Number of visitors	42,012	59,160

Source: Culture and National Heritage Department of the City of Krakow, Education, Culture and National Heritage Department of the Marshal Office of the Małopolska Region

	2009	2010	2011
Number of cinemas	13	13	13
Number of screens	77	76	77

Source: Krakow Statistical Office

Cultural institutions
financed by the
municipal and regional
government

Cinemas



Selected cultural and mass events

Event name	Date	Number of participants ¹
19th Grand Finale of the Great Orchestra of Christmas Charity	January 9th	5,000
8th Misteria Paschalia Festival	April 18-25th	6,000
2nd Czesław Miłosz Festival	May 9-15th	10,000
4th Film Music Festival in Krakow	May 19-22nd	15,000
Krakow Nights (Museum, Theatre, Jazz, Sacra, Poetry)	May-September	256,000
Selector Festival	June 3-4th	10,000
City Holiday	June 3-5th	100,000
3rd Art Boom Festival	June 10-24th	500,000
St. John's Fair	June 22-26th	100,000
Wreath	June 25th	45,000
20th Jewish Culture Festival	June 24th – July 2nd	50,000
15th Summer Jazz Festival at Piwnica pod Baranami	July 3-29th	30,000
9th Sacrum Profanum Festival	September 11-17th	9,200
3rd Conrad Festival	November 2-6th	8,500
4th Divine Comedy International Theatre Festival	December 8-15th	3,500
New Year's Eve on the Main Square (WOW!night)	December 31st	15,000

¹ In the case of some open-air events, the number of participants is an estimate

Source: Krakow Festival Office, Culture and National Heritage Department of the City of Krakow

Historic sites preservation – spending

Source of financing (thousands of PLN)	2009	2010	2011
City of Krakow budget	79,954.90	20,356.73	29,517.39
Municipal Building Management	8,542.60	12,320.70	1,445.75
National Fund of Regeneration of Krakow's Monuments, including:	41,792.20	42,900.00	42,507.37
NFRZK for sites of the Krakow Municipality	6,827.20	9,458.37	6,349.19
Budget of the Head of the Małopolska Region	–	40.00	240.11
Ministry of Culture and National Heritage	230.00	1,148.00	100.00
Total	130,519.7	76,765.43	73,810.64

Source: Culture and National Heritage Department of the City of Krakow

8

Transport

Krakow's road and street network

Elements of the road and street network	2010	2011
Basis layout (km), including:	312.2	312.2
National roads	38.6	38.6
Regional roads	25.2	25.2
District roads	248.4	248.4
Supporting system (km), including:	1,071.7	1,074.67
Municipal roads	787.8	790.27
Internal roads	283.9	284.4
Structures – bridges, overpasses, tunnels (amount)	164	170
Pedestrian footbridges (amount)	37	37
Pedestrian underground passages (amount)	22	22

Source: Municipal and Transportation Infrastructure Management

	2009	2010	2011
Total length of cycle paths (km), including:	96.6	99.3	113.6
Cycle paths build this year	2.6	2.6	14.4

Source: Municipal and Transportation Infrastructure Management

Cycle paths

	2009	2010	2011
Length of tramway routes (km)	335.3	341.0	347.0
Length of bus routes (km)	2,123.5	2,167.8	2,169.5
Number of MPK trams	418	410	409
Number of MPK/Mobilis buses	514/27	513/28	512/30
Total number of passengers served (million)	330.3	336.4	346

Source: Miejskie Przedsiębiorstwo Komunikacyjne S.A. w Krakowie (MPK), Mobilis Spółka z o. o. Oddział Kraków, Municipal and Transportation Infrastructure Management

Public transportation network

	2009	2010	2011
Number of vehicles registered in Krakow, including:	435,369	453,958	468,369
Number of cars	340,884	353,540	364,544
Motorisation index (total number of vehicles/1,000 residents)	577	600	617
Motorisation index (total number of cars/1,000 residents)	451	467	480

Source: Vehicle and Driver Registration Department of the Municipality of Krakow, Krakow Statistical Office

Motorisation index

	2011
Length of routes (km)	143
Number of passenger stations	7
Number of passenger stops ¹	10
Number of passenger and freight stations	4
Number of freight stations	4

¹ Including 2 stations (Krakow Balice and Krakow Business Park) located outside the administrative boundary of Krakow

Source: PKP PLK S.A. Zakład Linii Kolejowych w Krakowie, Przewozy Regionalne Sp. z o.o., Małopolski Zakład Przewozów Regionalnych, PKP CARGO S.A. Śląsko-Dąbrowski Zakład Spółki

Railroad network within Krakow

Number of passengers at Kraków Airport in Balice	2009	2010	2011
Total number of passengers, including:	2,680,322	2,863,996	3,014,060
Domestic traffic	192,333	196,878	278,788
International traffic, including:	2,487,989	2,667,118	2,735,272
Scheduled flights	2,291,289	2,439,065	2,554,418
Chartered flights	185,124	217,982	171,134
Transit flights	8,202	18,155	10,675

Source: Krakow Statistical Office

Air transport

9

Municipal management

Water supply

	2009	2010	2011
Average water consumption per day (thousands of m ³)	134.7	133.5	132.1
Water consumption per 1 resident (m ³ /month)	3.99	3.97	3.92
Residents using the city-wide network (%)	99.2	99.3	99.5
Water price per unit in a year ¹ (PLN/m ³)	2.59	2.78	2.85

¹ Price approved in a resolution of the Krakow City Council

Source: Miejskie Przedsiębiorstwo Wodociągów i Kanalizacji S.A. w Krakowie

Sewerage system and water treatment

	2009	2010	2011
Sewerage system			
Residents using the sewerage system to discharge waste (%)	98.7	98.8	99.1
Average municipal wastewater generation per day (thousands of m ³)	217.0	260.1	224.8
Price per unit of sewage discharged (weighted yearly average, administrator's price – PLN/m ³)	2.87	3.30	3.8
Water treatment system (%)			
Central system	99.11	99.1	99.1
Local system	0.89	0.9	0.9

Source: Miejskie Przedsiębiorstwo Wodociągów i Kanalizacji S.A. w Krakowie

Heating

		2009	2010	2011
Ordered heating power (in MW)	Total	1,246.0	1,244.6	1,255.3
	EC Kraków S.A.	908.4	907.9	907.4
	Elektrownia Skawina S.A.	291.4	292.5	303.6
	ArcelorMittal Poland S.A.	46.2	44.2	44.3
	Average heating sales price by MPEC (PLN/GJ) over a year	38.31	39.37	43.91

Source: Miejskie Przedsiębiorstwo Energetyki Ciepłej S.A. w Krakowie

Electricity supply

		2009	2010	2011
Overall electricity consumption in the city throughout the year (MWh), including:		2,829,915	2,671,128	2,371,436
Households		764,903	801,205	782,613
Number of electricity recipients		392,772	397,371	400,318
Energy unit price – without the distribution costs – weighted annual average (PLN/MWh)	Daytime rate	370.41	365.76	372.63
	Night-time rate	182.12	180.22	187.89
	Industrial rate	292.59	272.43	271.97
Energy unit price – energy and distribution costs – weighted annual average (PLN/MWh)	Daytime rate	547.24	555.23	571.85
	Night-time rate	268.65	273.18	287.67
	Industrial rate	406.60	400.62	406.78

Source: ENION Energia Ltd

	2009	2010	2011
Average gas consumption in the city (thousands of m ³)	222,076.1	245,844.4	215,764.2
Number of gas recipients	258,463	260,321	258,136
Unit gas rate (PLN/m ³) annual average	Normal rate – households	1.7080	1.7340
	Industrial rate	1.3827	1.3955
			1.8607
			1.4882

Source: Polskie Górnictwo Naftowe i Gazownictwo S.A., Gazownia Krakowska

Natural gas supply

Environmental protection

10

Category	Area	
	(ha)	(%)
City parks, green squares, greenery in housing estates (under ZIKiT management)	949	2.9
Street greenery	599	1.8
Cemeteries	138	0.3
Allotments	650	2.0
Greenery at sporting venues	133	0.4
Fort greenery (historic sites)	282	0.9
Fort greenery (areas adjacent to fort greenery)	801	2.4
Total	3,552	10.7

Source: Environmental Planning Department of the Municipality of Krakow

Greenery in Krakow

	2009	2010	2011
Amount of waste collected (thousands of tonnes)	307.7	313.3	304.2
Amount of recyclable material collected (thousands of tonnes)	19.5	25.7	35.0
Recycling (%)	69	68.4	62.5

Source: Municipal and Transportation Infrastructure Management

Municipal waste management

Krakow area	Concentration (µg/m ³)		
	Suspended dust particles PM10	SO ₂	NO ₂
Bujaka Str.	54	8	32
Krasińskiego Av.	7	11	73
Bulwarowa Str.	63	8	29
Levels admissible for human health	40	none	40

Source: Regional Environmental Protection Inspectorate in Krakow

Air pollution – average concentration per year in Krakow

	2009	2010	2011
Paper	1,492.07	1,524.12	1,288.11
Glass	1,768.32	1,852.49	1,927.40
Plastics, metal, aluminium	917.23	1,120.19	1,168.87

Source: Municipal Infrastructure and Transportation Management

Recycled material (t)

Flats commissioned
for use

	2009	2010	2011
Number of commissioned flats	10,344	4,716	4,852
Surface of commissioned flats (m ²)	631,349	336,649	323,896
Average usable surface of 1 flat (m ²)	61.0	71.4	66.8

Source: Krakow Statistical Office

Average offer prices
in selected Krakow
districts (PLN)

Area	Primary market	Secondary market	Difference between the primary and secondary market price
Śródmieście			
Stare Miasto (I)	12,200	7,959	-4,241
Grzegórzki (II)	8,310	7,148	-1,162
Prądnik Czerwony (III)	6,570	6,855	285
Krowodrza			
Prądnik Biały (IV)	6,591	7,005	414
Krowodrza (V)	8,270	7,766	-504
Bronowice (VI)	7,790	7,864	74
Zwierzyniec (VII)	9,230	8,259	-971
Podgórze			
Dębniki (VIII)	6,650	6,974	324
Łagiewniki-Borek Fałęcki (IX)	5,690	6,560	87
Swoszowice (X)	5,200	5,889	689
Podgórze Duchackie (XI)	6,000	5,662	-338
Bieżanów-Prokocim (XII)	5,580	5,749	169
Podgórze (XIII)	6,533	6,277	-256
Nowa Huta			
Czyżyny (XIV)	6,110	6,177	67
Mistrzejowice (XV)	6,750	6,214	-536
Bieńczyce (XVI)	5,480	6,038	558
Wzgórze Krzesławickie (XVII)	4,710	5,766	1,056
Nowa Huta (XVIII)	–	5,748	–

Source: Dominium.pl, Krajowy Rynek Nieruchomości – krn.pl, in: Krakow Real Estate Market – 2011, published by the Municipality of Krakow

Prices of building
land in Krakow

	2009	2010	2011
Average price per 1 m ² of land (PLN)	380	420	461

Source: Instytut Analiz Monitor Rynku Nieruchomości – mrn.pl in: Krakow Real Estate Market – 2011, published by the Municipality of Krakow

Sports and recreation

12

Number of venues

Sports stadiums	22
Sports fields	28
Multi-functional pitches	14
Indoor swimming-pools	5
Outdoor swimming-pools	3
Open watering places	0
Artificial ice rinks	3
Tennis courts	40
Sailing marinas	2
Shooting ranges	1
Hippodromes	3
Mountain canoeing tracks	1
Arching tracks	1
Sports halls	1
Exercise rooms, gyms	14

Source: Sports Infrastructure Board in Krakow

Municipal sports base

2009 2010 2011

Expenses (PLN)	221,047,950	170,116,210	194,420,761
----------------	-------------	-------------	-------------

Source: Reports about the execution of the budget of the City of Krakow

Expenses of the Municipality of Krakow on physical culture and sports

Healthcare

13

2009 2010 2011

Total number of outpatient clinics, health centres, clinics and doctor's practices, where:	483	488	565
Public units	64	62	62
In non-public units	389	400	486
Private doctor's practices – contract with NFZ (National Health Fund)	30	26	17

Source: Krakow Statistical Office

Outpatient healthcare

Hospitals

	General hospitals – public (including the departmental hospitals)	J. Babiński Specialist Hospital	Non-public units (including psychiatric units)	Public and non-public care and treatment units, hospices
Number of hospitals ¹	13 (2)	1	17 (3)	11 ²
Number of beds	4,611 ⁷ (428)	778	1,148 (80)	1,163
Employment (without data from departmental hospitals) ³				
Doctors	1,853 ⁴	-	454 ⁴ (1)	42 ⁵
Nurses and midwives	4,353 ⁴	-	896 ⁴ (4)	367 ⁵
Number of patients ⁶	213,861	-	54,203 (771)	2,269

¹ Data refer to the number of hospitals and healthcare units with hospital wards

² Including 1 care and treatment unit with psychiatric profile

³ Employed under employment contracts in hospitals as an organisational unit

⁴ Together with those employed under civil law contracts for the time not smaller than 40 hours per week

⁵ Working in persons – employed under employment contracts and under civil law contracts

⁶ Without inter-ward traffic

⁷ Without data from MSWiA Hospital

Source: Malopolska Provincial Office

Day care centres

	2009	2010	2011
Number of day care centres	22	22	22
Total number of children attending day care centres	1,650	1,800	1,900
Average number of children in an establishment	75	82	85
Number of divisions in day care centres	66	66	66

Source: Healthcare Office of the Municipality of Krakow





Type/cause of difficult living situation	Number of households affected by the problem	(%)	Total sum of granted help (PLN)	(%)	Average value of help per household (PLN)
Total ¹	14,893	–	57,803,015	–	3,881
Homelessness	828	5.56	3,332,118	5.76	4,024
Need for maternity care, including:	573	3.85	1,239,854	2.14	2,164
Multi-child family	217	1.46	1,400,863	2.42	6,456
Unemployment	5,035	33.81	15,211,319	26.32	3,021
Disability	8,440	56.67	34,482,194	59.65	4,086
Long-term or serious illness	8,865	59.52	32,240,152	55.78	3,637
Helplessness in care and upbringing matters – maintaining a household	1,313	8.82	3,905,125	6.76	2,947
Helplessness in care and upbringing matters – incomplete family	1,960	13.16	6,244,900	10.80	3,186
Helplessness in care and upbringing matters – multi-child family	389	2.61	1,714,322	2.97	4,407
Alcoholism	961	6.45	2,606,035	4.51	2,712
Drug addiction	117	0.79	321,374	0.56	2,747
Difficulties with adapting to life after being released from a penal institution	345	2.32	611,559	1.06	1,773
No skills of adapting to life of young adults leaving care and upbringing establishments and foster families	101	0.68	292,828	0.51	2,899
Domestic violence	241	1.62	746,624	1.29	3,098
Crisis situation	4,815	32.33	1,799,979	3.11	374
Difficulties with integration to society of persons with refugee status	2	0.01	25,946	0.04	12,973
Poverty	8,177	54.90	33,367,249	57.73	4,081
Random event	92	0.62	316,370	0.55	3,439

¹ The entries do not add up because one person may benefit from several allowances

Source: Municipal Social Help Centre in Krakow

Social help

Police – number of officers

	2009	2010	2011
Police officers	1,910	1,889	2,007
Civil workers	245	277	273

Source: Voivodeship Police Headquarters in Krakow

Police – detection rate of crimes committed in Krakow

	2009	2010	2011
Number of reported crimes	32,197	33,360	37,585
Detection index (%)	44.2	48.2	57.2

Source: Voivodeship Police Headquarters in Krakow

Municipal Guard – number of officers

	2009	2010	2011
Officers of the Municipal Guard	411	408	440
Civil workers	58	58	63

Source: Municipal Guard of the City of Krakow

Municipal Guard – number of recorded offences and intervention calls

	2009	2010	2011
Offences	157,773	138,146	155,440
Intervention calls	70,979	75,464	74,523

Source: Municipal Guard of the City of Krakow

Number of fires in Krakow

	2009	2010	2011
Fires in Krakow, where:	2,490	2,775	2,980
Small and medium fires	2,488	2,774	2,977
Large and very large fires ¹	2	1	3

¹ Large and very large fires occur when it results in burning or damaging of >301 m² of surface or >1,501 m³ of volume, or when >13 extinguishing currents are used

Source: State Fire Brigade

Public safety – financial outlay of the Municipality of Krakow (thousands of PLN)

	2009	2010	2011
Police	8,990.0	1,007.40	911.24
State Fire Brigade	43,047.3	41,858.63	41,779.52
Municipal Guard	28,867.0	28,653.64	32,212.72
Volunteer Fire Brigades	366.2	694.96	319.47
Civil defence	139.3	705.85	265.33
Total	81,409.8	72,920.5	75,963.49

Source: Report about the execution of the budget of the City of Krakow

Spatial planning

15

	2009	2010	2011
Surface area of the approved plans (ha)	6,304.1	10,216.6	11,795.1
Surface area of the City covered by local spatial management plans (%)	19.3	31.3	36.1

Source: Spatial Planning Office of the Municipality of Krakow

	2009	2010	2011
Number of issued decisions, including:	3,905	3,864	4,312
Single-family residential buildings	1,268	1,191	1,320
Multi-family residential buildings	319	208	200
Commercial buildings (public and private)	383	344	376
Industrial buildings	13	11	48

¹ In the areas with no valid local spatial management plans it is necessary to first obtain a decision determining the development conditions (WZ) in order to obtain the building permit

Source: Department of Architecture and Urban Planning of the Municipality of Krakow

	2009	2010	2011
Number of issued decisions	2,878	2,857	2,771
Single-family residential buildings	596	642	480
Multi-family residential buildings	91	106	93
Commercial buildings (public and private)	63	88	98
Industrial buildings	32	16	14

Source: Department of Architecture and Urban Planning of the Municipality of Krakow

Approved local spatial management plans

Decisions about building conditions¹

Decisions about building permits

Self-government management

16

Chairperson	Bogusław Kośmider
Deputy Chairperson	Stawomir Pietrzyk
Deputy Chairperson	Małgorzata Jantos
Deputy Chairperson	Józef Pilch

Source: Chancellery of the Council of the City and Districts of Krakow at the Krakow City Hall

Club	Chairperson	Number of councillors
Platforma Obywatelska (Civic Platform)	Grzegorz Stawowy	24
Prawo i Sprawiedliwość (Law and Justice)	Andrzej Duda from November 9th – Bolesław Kosior	12, from December 7th – 10
Przyjazny Kraków (Friendly Krakow)	Bartłomiej Garda	7
Independents		2

Source: Chancellery of the Council of the City and Districts of the Municipality of Krakow

Chairperson of the Council and Deputy Chairperson of the Krakow City Council

Political structure of the Krakow City Council

	2009	2010		2011	
		5th term	6th term		
Activities of the Krakow City Council	Conducted sessions/meetings	25/29	26/29	4/4	29
	Approved regulations	385	417	52	407
	Approved resolutions	24	88	1	25

Source: Chancellery of the Council of the City and Districts of the Municipality of Krakow

	2009	2010	2011	
Mayor of the City of Krakow	Number of ordinances issued by the Mayor of the City of Krakow	2,996	3,372	3,178
	Number of ventures and events covered with the honorary patronage of the Mayor	368	356	428
	Number of Mayor's meetings (with investors, external entities, inhabitants, etc) and official ceremonies	4,417	5,398	4,482

Source: Chancellery of the Mayor of the City of Krakow

	2009	2010	2011	
Activities of the District Councils	Conducted sessions	245	228	266
	Approved regulations	3,202	2,445	3,146

Source: Chancellery of the Council of the City and Districts of the Municipality of Krakow

Cooperation with partner cities and twin cities, and with no formal agreements	Twin city	Kiev (Ukraine) Leuven (Belgium) Mediolan (Italy) Nuremberg (Germany)
		Bordeaux (France) Bratislava (Slovakia) Budapest (Hungary) Cuzco (Peru) Edinburgh (United Kingdom) Fez (Morocco) Florence (Italy) Frankfurt am Mein (Germany) Göteborg (Sweden) Innsbruck (Austria) Leipzig (Germany) Lviv (Ukraine) Orlean (France) Ostrava (Czech Republic) Pecs (Hungary) Rochester (USA) Rome (Italy) San Francisco (USA) St. Petersburg (Russia) Sevilla (Spain) Solura (Switzerland) Tbilisi (Georgia) Vilnius (Lithuania) Zagreb (Croatia)
	Partner city	
	Honorary twin city	Kurytyba (Brazyl) La Serena (Chile) Quito (Ecuador)
Cooperation without any formal partnership agreements		Dublin (Ireland) Krasnojarsk (Russia) Moscow (Russia) Nanjing (China) Strasburg (France) Tartu (Estonia) Trondheim (Norway) Vienna (Austria) Veliko Tarnovo (Bulgaria)

Source: Chancellery of the Mayor of the City of Krakow

Name of the organisation	Membership fee
EUROCITIES Association	15,820 EUR
League of Historical Cities	100 USD
Organisation of World Heritage Cities	4,000 USD
National Committee of the ICOMOS Council on Monuments and Sites	3,000 PLN
European Cities Marketing – ECM	2,200 EUR
International Hansa Union	No fee
European Network Cities for Children	No fee
Association of the European Cities of Culture 2000	No fee

Source: Chancellery of the Mayor of the City of Krakow

	2009	2010	2011
Average monthly visits to the home page	1,327,782	1,561,043	1,103,627

Source: Department of Information, Tourism and Promotion of the Municipality of Krakow

	2009	2010	2011
Number of visits to the BIP MK websites	107,500,000	116,600,000	125,500,000
Average daily number of visits to the BIP MK websites	294,000	319,000	343,000

Source: Department of Organisation and Supervision of the Municipality of Krakow

**Krakow's membership
in international
organisations**

**City internet platform
"Magical Krakow"
– www.krakow.pl**

**Public Information
Bulletin for the City
of Krakow
– www.bip.krakow.pl**

Property and budget

Net value of assets ¹ , including:	54,165,113.3
Fixed assets, including:	53,742,655.8
Lands	46,847,996.4
Current assets	422,457.5

¹ As of 31 December 2011

Source: Information of the condition of the municipal property in 2011

Type of land	Surface area (ha)	Share in the Krakow's surface area (%)
Agricultural land, where:	14,819	45.3
Farm land	10,374	31.7
Orchards	654	2.0
Meadows	2,645	8.1
Pastures	1,146	3.5
Developed and urbanised land, where:	11,128	34.1
Housing areas and other developed areas	6,246	19.1
Urbanised non-developed areas	594	1.8
Recreation and leisure areas	887	2.7
Transportation areas (roads, railway areas, other transportation areas)	3,401	10.4

17

**Amount of assets
of the Municipality
of Krakow
(in thousands PLN)**

**Land in the area
of Krakow**

Land covered with forests	1,335	4.1
Land covered with waters (surface, flowing, and standing waters)	552	1.7
Wastelands	270	0.8
Various areas	673	2.1
Other lands not included in the list	3,903	11.9
Total geodetic surface area	32,680	100.0

Source: Department of Geodesy of the Municipality of Krakow

Sales of real property of the Municipality of Krakow

	2009	2010	2011
Communal flats			
Number of sold communal flats	613	1,024	1,202
Total income from the sale of flats (thousands of PLN)	17,329.1	29,247.6	29,434.6
Commercial premises			
Number of sold commercial premises	42	47	33
Total income from the sale of commercial premises (thousands of PLN)	11,546.61	13,701.2	6,921.6
Garages			
Number of sold garages	21	21	12
Total income from the sale of gara ges (thousands of PLN)	705.62	509.9	292.9
Plots			
Surface area of sold plots (ha)	36.03	22.67	25.52
Total income obtained from the plots (thousands of PLN)	19,700.2	24,332.2	31,008.2

Source: Department of Treasury of the Municipality of Krakow

Purchases of lands by the Municipality of Krakow

	2009	2010	2011
Surface area (ha)	9.49	4.91	5.76
Total spent sum (thousands of PLN)	36,679.5	10,055.5	6,731.1

Source: Department of Treasury of the Municipality of Krakow

Budget of the City of Krakow – income

	Total (th. of PLN)	Plan execution (%)
Agriculture and hunting	1,814.3	100.0
Transport and communication	309,881.7	83.8
Tourism	1,156.6	444.9
Housing	328,284.5	86.7
Service activity	16,068.8	89.2
Public administration	30,307.2	81.6
Offices of chief bodies of state authority, control and law protection, and judiciary	1,199.4	95.9
National defence	4.0	57.9
Public safety and fire protection	45,852.0	99.0
Income from legal persons, natural persons and other units without legal personality, and expenses related to its collection	1,541,056.7	98.7
Various settlements	708,503.0	100.0
Education and upbringing	75,618.0	90.0

Healthcare	11,713.1	96.7
Social help	185,756.5	101.5
Other tasks within the scope of social policy	21,735.9	105.8
Educational upbringing care	6,520.5	75.1
Communal management and environmental protection	16,152.1	21.1
Culture and national heritage protection	7,850.2	31.5
Physical culture and sports	27,016.1	46.3
Total income¹	3,336,490.7¹	92.9

¹ Data from individual boxes may not add up to the 'total' box due to the rounding used

Source: Report about the execution of the budget of the City of Krakow for 2011

	Total (th. of PLN)	Plan execution (%)
Agriculture and hunting	1,852.0	98.9
Forestry	8.0	100.0
Transport and communication	609,600.2	82.1
Tourism	212.8	65.0
Housing	167,940.9	85.0
Service activity	12,888.1	88.1
Public administration	197,990.9	91.9
Offices of chief bodies of state authority, control and law protection, and judiciary	1,199.4	96.0
National defence	4.0	40.4
Public safety and fire protection	75,963.5	98.0
Income from legal persons, natural persons and other units without legal personality, and expenses related to its collection	3,069.5	89.3
Public debt servicing	85,421.5	94.3
Various settlements	67,125.1	95.0
Education and upbringing	972,529.3	97.7
Higher education	511.3	100.0
Healthcare	48,261.9	97.8
Social help	351,307.5	99.1
Other tasks within the scope of social policy	50,595.2	92.7
Educational upbringing care	161,295.2	96.9
Communal management and environmental protection	121,612.4	79.6
Culture and national heritage protection	185,491.0	84.1
Botanical and zoological gardens, as well as natural areas and protected nature sites	10,000.0	100.0
Physical culture and sports	194,420.8	98.2
Total expenses	3,319,300.5	91.7

Source: Report about the execution of the budget of the City of Krakow for 2011

Budget of the City of Krakow – expenses

Income to the budget of the City of Krakow in 2010 from foreign sources – non-reimbursable resources (thousands of PLN)

	2009	2010	2011
Investment income	84,027	197,534	76,607
Current income	10,175	17,457	24,273
Total income	94,202	214,991	100,880

Source: European Funds Office of the Municipality of Krakow

Budget expenses of the City of Krakow on investments in 2011 (thousands of PLN)

Strategic investments	347,548.5
Programme investments	134,488.9

Source: Report about the execution of the budget of the City of Krakow for 2011

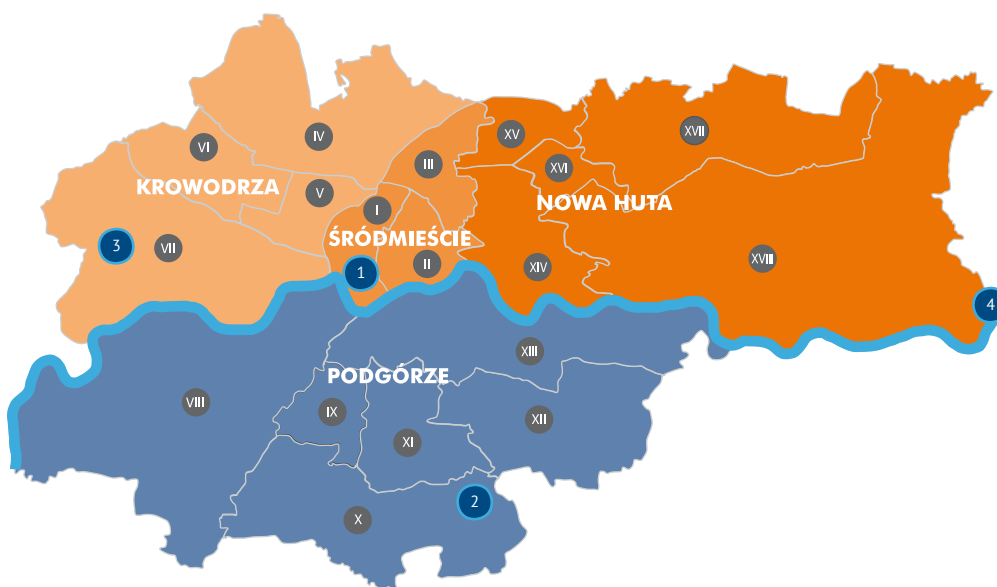
Companies in which the Municipality of Krakow had shares or stocks

Name of the company	Chief area of activity	Share of the Municipality of Krakow (%)
Companies with majority share held by the Municipality of Krakow		
Miejski Klub Sportowy Cracovia S.S.A. (Cracovia City Sports Club)	Sports activity	50.54
Companies with minority share held by the Municipality of Krakow		
Agencja Rozwoju Gospodarczego Kraków – Wschód Sp. z o.o. (Krakow – East Economic Development Agency)	Krakow – East Strategic Area Management	0.20
CONCORDE INVESTISSEMENT S.A.	Counselling in the field of economic activity and management	0.20
Krakowska Agencja Rozwoju Turystyki S.A. (Krakow Tourism Development Agency) under liquidation	No longer running any economic activity	46.51
Krakowski Park Technologiczny Sp. z o.o. (Krakow Technological Park)	Management of the special economic zone	0.50
Krakowskie Centrum Komunikacyjne Sp. z o.o. (Krakow Transportation Centre) under liquidation	No longer running any economic activity	33.33
Krakowskie Towarzystwo Budownictwa Społecznego Sp. z o.o. (Krakow Social Construction Society)	Construction and purchase of residential houses, and their maintenance on the rental basis	17.99
Len S.A. under liquidation	No longer running any economic activity	–
Małopolska Agencja Energii i Środowiska Sp. z o.o. (Małopolska Energy and Environment Agency)	Activity in the sphere of public utility for energy observance and protection	37.00
Międzynarodowy Port Lotniczy im. Jana Pawła II Kraków – Balice Sp. z o.o. (John Paul II's Krakow-Balice International Airport)	Expansion, modernisation and maintenance of the airport	1.04
Regionalny Dworzec Autobusowy Sp. z o.o. (Regional Coach Station)	Operator of the regional coach station	8.45
Towarzystwo Budownictwa Społecznego KRAK-SYSTEM S.A. (KRAK-SYSTEM Social Construction Society)	Construction and purchase of residential houses on the rental basis	17.01
ZMK Kraków S.A. under liquidation	No longer running any economic activity	0.20

Source: Department of Treasury of the Municipality of Krakow

Number	Name	Population	Surface area (ha)
I	Stare Miasto	42,976	559.29
II	Grzegórzki	31,072	586.18
III	Prądnik Czerwony	49,035	638.81
IV	Prądnik Biały	70,155	2,370.55
V	Krowodrza	42,073	538.32
VI	Bronowice	23,815	957.98
VII	Zwierzyniec	21,338	2,866.90
VIII	Dębniki	60,696	4,671.11
IX	Łagiewniki-Borek Fałęcki	16,282	573.90
X	Swoszowice	22,319	2,416.73
XI	Podgórze Duchackie	54,252	1,065.24
XII	Bieżanów-Prokocim	65,261	1,846.93
XIII	Podgórze	33,964	2,516.07
XIV	Czyżyny	29,314	1,229.44
XV	Mistrzejowice	54,864	547.82
XVI	Bieżczyce	44,524	369.43
XVII	Wzgórza Krzestawickie	20,587	2,375.82
XVIII	Nowa Huta	59,397	6,552.52
Total		741,914	32,683.04

Source: Author's study on the basis of data from the IT Department of the Municipality of Krakow and the web site: Kraków StatKraK Liczby... Miasto... Mieszkańcy (Krakow StatKraK Figures... City... Inhabitants) service



Adam Mickiewicz Monument	1
Intersection of parallel 50°N and meridian 20°E	2
Mound of Józef Piłsudski	3
Mouth of the Kościelnicki Stream	4

Prepared by: Department of City Strategy and Development, Municipality of Krakow

Graphic design, editing, proofreading: Olison's Project

Photographs: Paweł Skupień, Tomasz Argasiński

Print: System-Graf

**Administrative
division of Krakow
– districts**

Legend